

caroma[®]

Bathroom Planning Guide

Bathroom Planning Guide

Bathroom renovations and new builds can be a confusing and time consuming process but they don't have to be. While the following is not intended to be a complete renovation guide, it is designed to provide you with some helpful tips and guidance to assist you step by step with your renovation. ...



Your bathroom is a sanctuary for the soul and senses; a stylish personal retreat from everyday life. Design is important, function is vital.

Setting Your Budget

Setting a budget is an important step when undertaking any renovation or build and it should be used as a guide throughout the selection process.

Today, most manufacturers offer a range of products to suit all budgets. However, when it comes to choosing fixtures and fittings, you usually get what you pay for. Choosing reputable brands such as Caroma will help ensure you're satisfied with the quality and performance of the products you select.

Bathroom Selection Made Easy

The bathroom has come a long way from its utilitarian origins transforming itself into a sanctuary for the soul and the senses. This space is high on style, with bathroom renovation all about creating a personal retreat from the hectic pace of everyday living. This room also needs to combine elements of comfort and functionality too.

Lifestyle will be a key factor in determining the style and design of your bathroom. You'll need to consider everything from the size of your family to how many people use the space on a regular basis and at any one time, as well as what type of activities it's generally used for.

Style & Colour

“Your personal style will ultimately guide how your new bathroom takes shape.”

Bathroom renovation starts with the choice of a style and colour scheme. The overall theme of your home should drive the style you choose for your bathroom. White remains the most popular colour choice for bathrooms. However, bolder colours are also finding their way into this space through paint and tiles. To ensure your bathroom has a timeless look and feel, consider starting with a neutral base and adding touches of colour through your choice of accessories, fixtures and fittings.



Fittings & Fixtures

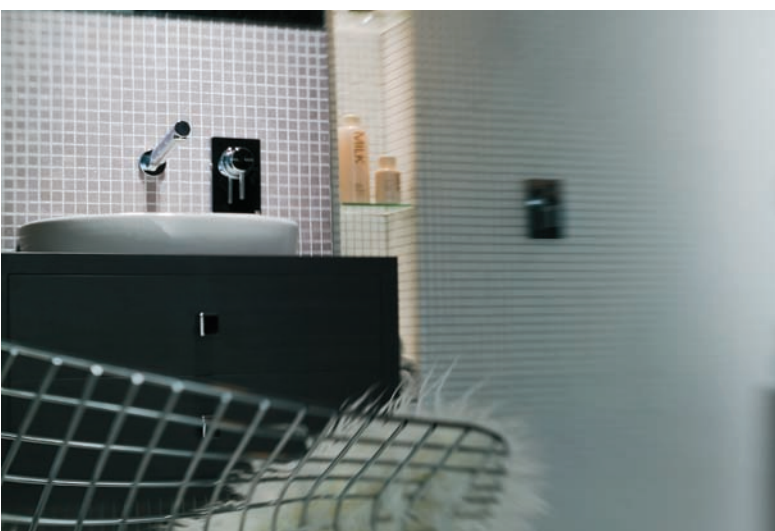
With so many different elements making up the bathroom space knowing where to start can be a little daunting. Research indicates that tiles tend to be the first product selected, followed closely by the vanity unit and then the tapware. From here, the bath, shower, toilet and accessories are then chosen.

1. Tiles

“Set the tone for your bathroom”

Tiles are a top choice for bathrooms, offering a fresh, hygienic option with plenty of decorative potential. Often found on both floors and walls, the tiles you choose will set the tone for your entire bathroom renovation. Today there is a seemingly limitless range of tiles to choose from in different colours, shapes, sizes and materials.

- Consider ceramic, porcelain, natural stone or glass
- Neutral colours are timeless, medium shades warm up the room
- Accent tiles add a splash of colour and vibrance



2. Vanity Units

“Choose to suit your space & lifestyle”

Your choice of vanity unit ultimately depends on the size of your bathroom and your family, as well as the number of bathrooms in your home.

Pedestal basins are ideal for smaller bathrooms where space is at a premium or powder rooms where grooming activities tend to be limited to hand washing. Wall-hung basins are another alternative for smaller bathrooms as they create the illusion of space.

For those without space constraints, a basin semi-recessed into a vanity unit is a stylish option that also offers plenty of storage for toiletries and bench space for grooming. An above the counter basin is a popular choice and can serve as a decorative piece within the bathroom space.

Larger families or those with a limited number of bathrooms should consider installing multiple basins.

Your choice of vanity unit should go hand in hand with your choice in tapware. It's important that these two elements match both visually and practically. Tapware options for basins include three piece sets consisting of an outlet and two taps, or mixers which are becoming increasingly popular as they allow flow and temperature control to be adjusted in one easy motion.

- Wall basins with pedestal or shroud are ideal for small bathrooms
- Semi-recessed or above-counter basins allow extra storage space
- Multiple basins are ideal for multiple users and add a sense of luxury

3. Tapware

“High Impact, High Style”

Nothing makes a bathroom sparkle more than beautiful new tapware. In comparison to other fixtures and fittings found in the bathroom, tapware is a relatively low cost option that can be easily incorporated to improve the overall look of the room.

Today a huge range of tapware styles are available to make your choice seem almost limitless. Caroma research indicates that when it comes to bathroom tapware, consistency is the key. The aim is to create the look of a suite within this space and that means stylistically everything from the basin to the shower and the bath should match. With most Caroma ranges offering complete bathroom collections, it's easy to do just that.

- Basin tapware should set the style for all other tapware
- Mixers allow excellent water flow and temperature control

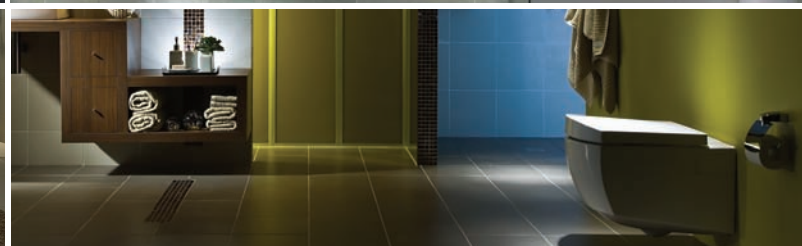
4. Bath

“Your escape from reality”

Baths tend to occupy a large amount of space in the bathroom. For those with plenty of room, today's trend is large and luxurious tubs designed for indulgence.

Jetted baths help create a spa experience, while large soaking tubs are great for peaceful relaxation. For those with space constraints, the bath tub needs to be large enough to still be comfortable. Consider a corner tub as an alternative to an elongated one.

- Choose the bath shape and size perfect for your space
- From large and luxurious to jetted corner baths, the trend is indulgence
- Ensure taps – wall or tub mounted are easy to reach



5. Showers

“Wash your cares away”

Showers are not just for getting clean anymore. It's all about relaxation, comfort and using water to rejuvenate the body and the soul. The shower has become a personal retreat and it should be customised to suit your needs. While the traditional stall remains popular, the trend is toward showers built for two and open plan showers without doors.

Popular shower varieties include the following:

- Showers on rail
- Hand showers
- Fixed showers
- Rain showers

While the look of your shower is important, its performance ultimately impacts comfort and convenience. The measure of what we deem to be a comfortable shower is clearly linked to water pressure and delivery. High quality aerators ensure that Caroma showers deliver the best possible spray pattern for maximum coverage in the shower.



6. Toilets

“Function meets design”

While the toilet remains a utilitarian fixture in the bathroom, its design has certainly stepped up with plenty of styles, shapes and sizes now available.

Two piece toilets have a separate bowl and tank and offer the greatest range of designs and installation flexibility. Compact wall-hung and in-wall European inspired toilets are becoming increasingly popular because of their sleek, contemporary look. The Caroma Invisi™ range is a great example of toilet suites where the plumbing and cistern are cleverly concealed behind the wall for an integrated streamlined look that saves space in your bathroom.

To optimise water usage, consider a dual flush or low flush toilet. Dual flush toilets feature two different buttons to give you the option of a half or full flush of the water in the cistern. Low flush toilets take water saving one step further by using significantly less water per flush than a conventional toilet. Innovative Smartflush® toilet suites exclusive to Caroma and Fowler reduce the full flush water requirement down to just 4.5 litres helping the average home save up to 35,000 litres of water per year compared to a 11L single flush toilet suite.

- Choose from toilet suites, space-saving wall-faced or streamlined wall-hung styles
- Dual or low flush toilets optimise water usage, therefore savings
- Award-winning Caroma & Fowler Smartflush® technology reduces a full flush to just 4.5 litres

7. Accessories

“The final touch to compliment the bathroom”

What better way to personalise your bathroom retreat than by selecting from the extensive range of accessories on offer.

Consider towel rails or rings, toilet roll holders and soap dishes to complement your choice of tapware. Many Caroma tapware ranges offer a selection of matching accessories to help you complete the look of your bathroom.

Add warmth and comfort using accessories like fog free mirrors, heated towel racks and underfoot heating systems which are perfect on a cold morning.

Even entertainment has a place in today's bathroom with televisions and CD players finding their way into this space. Furniture, greenery and art can also be used to turn your bathroom into a living space.

When it comes to the bathroom, anything goes and all of these extras will help beautify your space.

- Towel rails or rings, toilet-roll holders and soap dishes should suit tapware
- TVs, CD players, furniture, plants and art turn bathrooms into living spaces
- Consider fog-free mirrors and underfloor heating



Bathroom Renovation Checklist

Research current bathroom designs

Set your budget

Set your Style

Consult a Bathroom Designer

Consult a Plumber

Consult a Tiler

Select Tiles

Select Vanity

Select Tapware

Select Bath or Spa

Select Shower

Select Toilet

Select Accessories



caroma®

Caroma Industries Limited
Phone 1800 CAROMA (1800 227 662)
www.caroma.com.au

All information contained in this brochure should serve as a guide only. We recommend a licensed plumber is consulted prior to purchase and to install your products to ensure the correct fittings are selected and to comply with any laws, regulations and warranty conditions related to these products and the bathroom area. ©Copyright 2007. Caroma Industries Ltd. ABN 35 000 189 433. All rights reserved. Warning: products in this flyer are the subject of registered designs and patents. ® is a registered trademark of Caroma Industries.